



GILCHRIST GRIZZLY GAZETTE

QUARTERLY NEWSLETTER

ISSUE 1 | OCTOBER 2022

PTO PRESIDENT'S MESSAGE

I am thankful for an amazing first nine weeks of the school year at Gilchrist. Every one of our faculty, students and families played a great role in making this 2022 "Back to School" a seamless transition for all involved.

We are excited to announce that not only did we meet our Boosterthon goal this year, but we significantly exceeded our expectations! THANK YOU FOR YOUR SUPPORT! Our outdoor Grizzly Cafe plans are in the works! We are looking forward to creating an inviting space for you to enjoy while having lunch with your children and grandchildren. The next nine weeks bring several special traditions at Gilchrist, not the least of which is our Soup & Chowder Luncheon. This is an opportunity to feed our fabulous Grizzly staff with a hearty meal of soups, stews and chilis. We hope you will join us in being a part of this traditional meal. In addition, we are excited to have our "Take a Vet to School Day" event on November 10th. Make sure to look out for information on inviting a special veteran in your child's life to this memorable event. Finally, we look forward to our first Winter Concert with our new music teacher, Ms. Register. It "sounds" like it's going to be wonderful, and we hope to see you on December 6th to ring in the Winter season

Caroline Weiss

PRINCIPAL'S CORNER

We have had a wonderful start to the 2022-2023 school year! Thank you everyone who attended Open House. It is so great to be able to have gatherings again here on campus! We recently completed some exciting events including our Boosterthon Fun Run, Student Council elections, and soon will have Red Ribbon Week. The 1st nine week grading period will end on October 14th and report cards will be available to view in Parent Portal on October 26th. As always, please continue to encourage your students to read, read, read! Be sure to join our email listserv on our website if you have not already done so to stay up to date with all of the latest announcements.

Scotty Crowe

GRIZZLY SPIRIT SHOP

Get your Gilchrist Grizzly Gear right here! Don't forget to wear your red on Spirit Fridays!



CALENDAR

- 10/17: Teacher Planning Day
- 10/20: October Faculty Meeting
- 10/24-31: Spirit/Book Character Week
- 11/1: STEAM Clubs Begin
- 11/3: Chowder Luncheon
- 11/7: Tropicana Speech Contest
- 11/10: Take a Vet to School Day
- 11/10: November PTO Meeting @ 12:00 Noon
- 11/21-25: Thanksgiving Holidays
- 12/6: Winter Concert

amazonsmile

Select "**Gilchrist Parent Teacher Organization**" for your Amazon orders with AmazonSmiles. Thank you for your participation!



GILCHRISTPTO.COM

Sign up to receive volunteer opportunities, purchase Grizzly Gear, become a Grizzly Giver.



[@GILCHRIST_PTO](https://www.instagram.com/GILCHRIST_PTO)

Find out what is happening around school & for reminders about upcoming events on campus!



GES LISTSERV

Get important weekly updates and important info delivered right to your email! Find a direct link on the PTO website.

TAKE A VET TO SCHOOL

Gilchrist students and staff will be hosting our annual Take a Veteran to School hallway parade and reception on Thursday, November 10th at 9 a.m. We encourage students who have a veteran in their family to invite them to spend the morning with us. We ask that students wear red, white, and blue that day! This is a favorite Gilchrist tradition, and hope that you join us to salute our veterans. More information to follow in Friday folders.



Thank you for supporting Boosterthon this year. Please hear us say a HUGE "Thank you!" to our students, staff, and donors for this incredible Gilchrist Elementary School Fun Run fundraiser.

Here are our final stats:

We raised \$59,000 for school improvements. This will directly impact our students and staff!

Our students ran 25,049 laps combined to help our school!

We celebrated our community coming together and created unforgettable memories at our Gilchrist Elementary School Fun Run event.

Thank you for your support of our school. We're grateful for our Gilchrist Elementary School community!

VOLUNTEERS NEEDED

We are excited to announce Volunteers and Mentors are welcomed and needed on our Gilchrist Grizzly campus.



If you decide to volunteer or mentor, your volunteer duties must be arranged with a teacher or staff member. ALL volunteers are required to fill out a volunteer application every year.

We have several exciting Volunteer needs coming up so be on the lookout for emails in the next few weeks! Please fill out the form as soon as possible if you are interested in being back on campus!



Grizzly Guys represents the men of the PTO. Our first meeting was exciting with over 30 attendees. Our meetings will be held quarterly, allowing our Grizzly Guys to have breakfast or share a great start to the day with your Little Grizzlies. Keep an eye out for upcoming events through all Gilchrist Elementary social media channels, email, and the Grizzly Gazette. We hope you will join us for our next meeting or social opportunity. Please contact adamyoung8@gmail.com for more information.

TEACHER AWARD WINNERS

We are thrilled to announce this year's Gilchrist award winners!

School Related Employee of the Year - Mr. Brandon Green

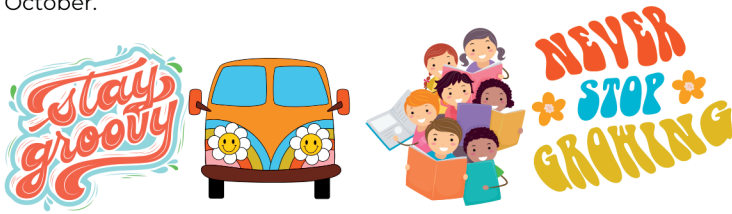
Glen Howell Distinguished Educator of the Year - Mrs. Dawn Wilder

Gilchrist Teacher of the Year - Mrs. Laura Powell



ACCELERATED READER

The Accelerated Reader program is getting GROOVY this year. We held a pep rally to get students excited for the this year and we are having our first Accelerated Reader celebrations in October.



Support Gilchrist by becoming a Grizzly Giver this fall! Grizzly Givers is a great way to support Gilchrist and share your school pride! One hundred percent of the money given through the PTO's Grizzly Givers programs stays with our school, funding past projects like the following programs and services:

Art Kiln

Playground Sunshade

Digital Marquee in front of the School

Cafeteria Sound System

Stretch Your Mind

AR Celebrations

Teacher Funds for Supplies

Your family can contribute towards the continued improvement of Gilchrist by becoming a Grizzly Giver! All donors will receive Grizzly Givers stickers with the new Gilchrist logo! Donations can be made on the Gilchrist PTO website or pick up a form in the front office!

Membership info is online at Gilchristpto.com



GILCHRIST PTO EXECUTIVE BOARD MEMBERS

PRESIDENT

Caroline Weiss

CORRESPONDING

SECRETARY

Melissa Tate

VP OF ACADEMICS

Jenna Nielsen

RECORDING

SECRETARY

Parker Sullivan

VP OF SCHOOL ENGAGEMENT

Belinda Wise

PRINCIPAL

Scotty Crowe

TREASURER

Colby Lindsay

TEACHER LIAISON

Amanda Whitaker

GRIZZLY GIVERS

LEGACY GRIZZLY

The Burns Family

David and Tiffany Cruz

John Katopodis

The Green Family

The Hartlage Family

The Eggers Family

Tallahassee Welding & Machine Shop

Parker Sullivan & Roger Beckham

Courtney Brewer & David Nelson

Shawn & Meghan Ramsey

Rick & Amelia Savage

Tracy & Charles Yowell

Brass/Shoemaker Family

GOLD GRIZZLY

Drew & Susan Hildebrand

Matt & Katie Carson

Sean & Colby Lindsay

David & Mary Mica

RED GRIZZLY

Rollins & Sarah Ball Miller

Nhi Ho

Jim Curry & Marisa Button

Chris & Alli Schoonover

Ray & Debra O'Neal

David & Rachel Rippee

Mary Linzee & Freddy Branham

BLACK GRIZZLY

Beth Nunnally

Rick & Christina Kingsley

Arden & Ned Fernandez

Dan & Shelby Augustyniak

Kiara Sullivan

Mike & Merritt Newell

WHITE GRIZZLY

Meredith McMillan

Quinn Skinner

Carter & Jenny Barfield

Elizabeth Madden

Jennifer Patty

Scotty Crowe

Devin Smith



BUSINESS

Please support those businesses who support your Gilchrist Elementary PTO!

SPONSORS



CRUZ LAW FIRM, P.A.
Employment Lawyers



PRIME MERIDIAN BANK
MEMBER FDIC



ROBERTS
CONSTRUCTION SERVICES, LLC



HILL SPOONER & ELLIOTT INC.
REAL ESTATE

Molly Corder, REALTOR®
molly@hillspooner.com | 850-524-056



Full Press
APPAREL



ANB
ALLEN NORTON & BLUE
PROFESSIONAL ASSOCIATION



Millwood Services LLC
• Forestry Mulching
• Land Clearing & More
• Free Estimates
(850) 241-6563



CMS
Construction & Maintenance Specialists, LLC

Phone: (850) 509-7790
License #CBC 1259020

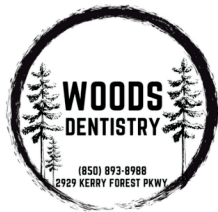


MA
MONOGRAMART
CUSTOM EMBROIDERY • CORPORATE APPAREL

WEAR YOUR BRAND



OmniCon CORP
The Smarter Way to Build®



WOODS DENTISTRY
(850) 893-8988
2929 KERRY FOREST PKWY



Curly Girl Team
CORINNE JOHNSTON
REALTOR
(850) 294-7058



Killlearn Lakes Taekwondo

Robert Murrell, DMD
Stephen Silvers, DMD
Evan Murrell, DMD



Family and Esthetic Dentistry

1286 Timberlane Road
Tallahassee, FL 32312
893-0711

www.murrell-silvers.com

Offering Cerec Single Visit Crowns



Panda Buffet
3507 Thomasville Rd.
Tallahassee, FL 32309
Tele: 850-668-1457



TALLAHASSEE WELDING
MACHINE SHOP & POWDER COATING
SINCE 1942 • 1220 LAKE BRADFORD ROAD
WWW.TALLAHASSEEWELDING.COM
850.576.9596



the shoebox



TECH CORP
Technology Made Simple



CONSTRUCTION SOLUTIONS, LLC
Phone: 850.219.8800, Fax: 850.878.0611, CGC: 1512999
1350 Market St. Suite 200, Tallahassee, Florida 32312
www.csllc-us.com



NAGOYA
DAILY LUNCH SPECIALS
SUSHI & HIBACHI
TEMPURA, KATSU, & TERIYAKI